

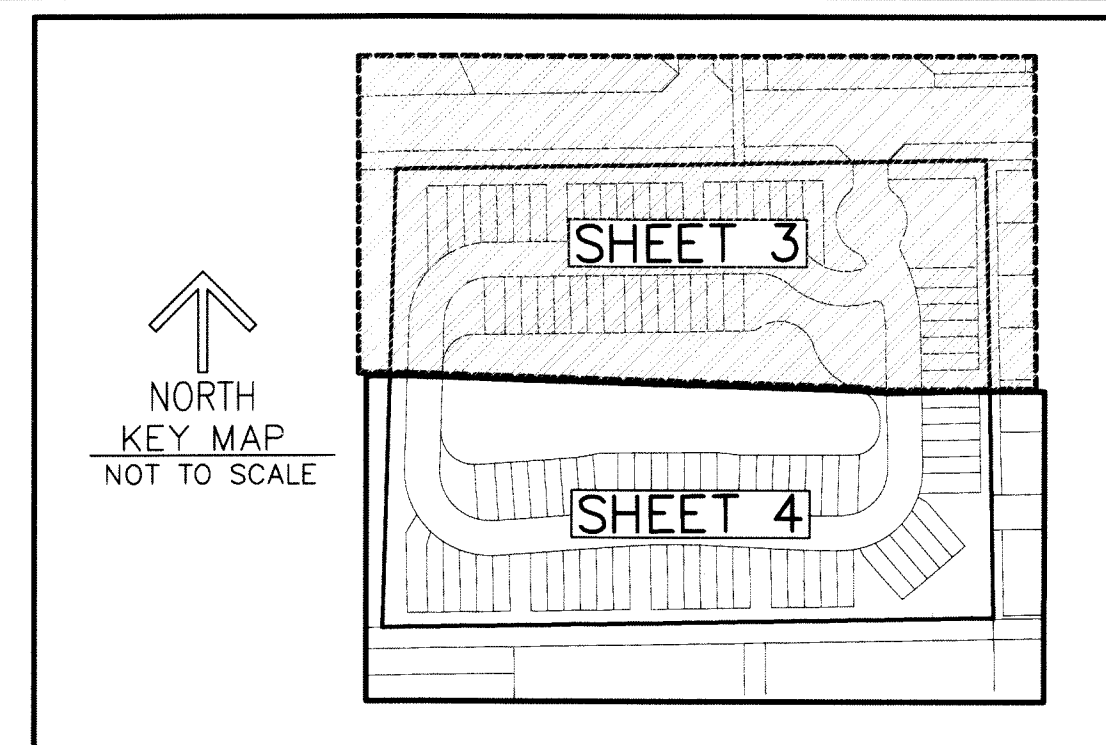
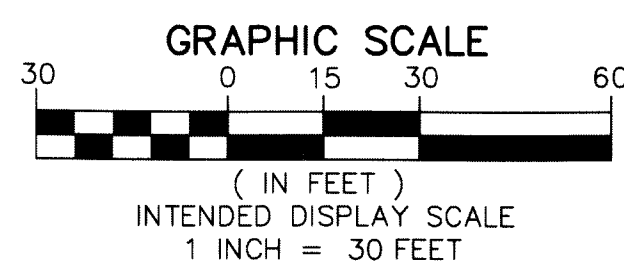
# PIONEER ESTATES

BEING A REPLAT OF PARCEL B, PEBB PIONEER,  
AS RECORDED IN PLAT BOOK 120, PAGES 107 THROUGH 111 OF THE PUBLIC RECORDS OF PALM BEACH COUNTY, FLORIDA,  
LYING IN SECTION 6, TOWNSHIP 44 SOUTH, RANGE 42 EAST,  
VILLAGE OF ROYAL PALM BEACH, PALM BEACH COUNTY, FLORIDA.

THIS INSTRUMENT PREPARED BY  
DAVID P. LINDLEY  
OF  
**CAULFIELD and WHEELER, INC.**  
SURVEYORS - ENGINEERS - PLANNERS  
7900 GLADES ROAD, SUITE 100  
BOCA RATON, FLORIDA 33434  
OFFICE (561)392-1991 FAX (561)750-1452  
CERTIFICATE OF AUTHORIZATION NO. LB 3591

## LEGEND/ABBREVIATIONS

- AC - ACRES
- CB - CHORD BEARING
- CD - CHORD DISTANCE
- C - CENTERLINE
- DE - DRAINAGE EASEMENT
- O.R.B. - OFFICIAL RECORDS BOOK
- Δ - DELTA (CENTRAL ANGLE)
- L - ARC LENGTH
- LAE - LIMITED ACCESS EASEMENT
- LB - LICENSED BUSINESS
- L.W.D.D. - LAKE WORTH DRAINAGE DISTRICT
- LME - LAKE MAINTENANCE EASEMENT
- PRPA - PIONEER ROAD PROPERTY ASSOCIATION, INC.
- PBCUE - PALM BEACH COUNTY UTILITY EASEMENT
- PG - PAGE
- P.U.D. - PLANNED UNIT DEVELOPMENT
- R - RADIUS
- (R) - RADIAL
- REG - REGISTERED
- SF - SQUARE FEET
- (T) - TOTAL
- UE - UTILITY EASEMENT
- POP - PERMANENT CONTROL POINT
- PRM - DENOTES PERMANENT REFERENCE MONUMENT  
4" x 4" x 24" CONCRETE MONUMENT WITH  
ALUMINUM DISK STAMPED "C&W PRM LB3591"  
UNLESS OTHERWISE NOTED.

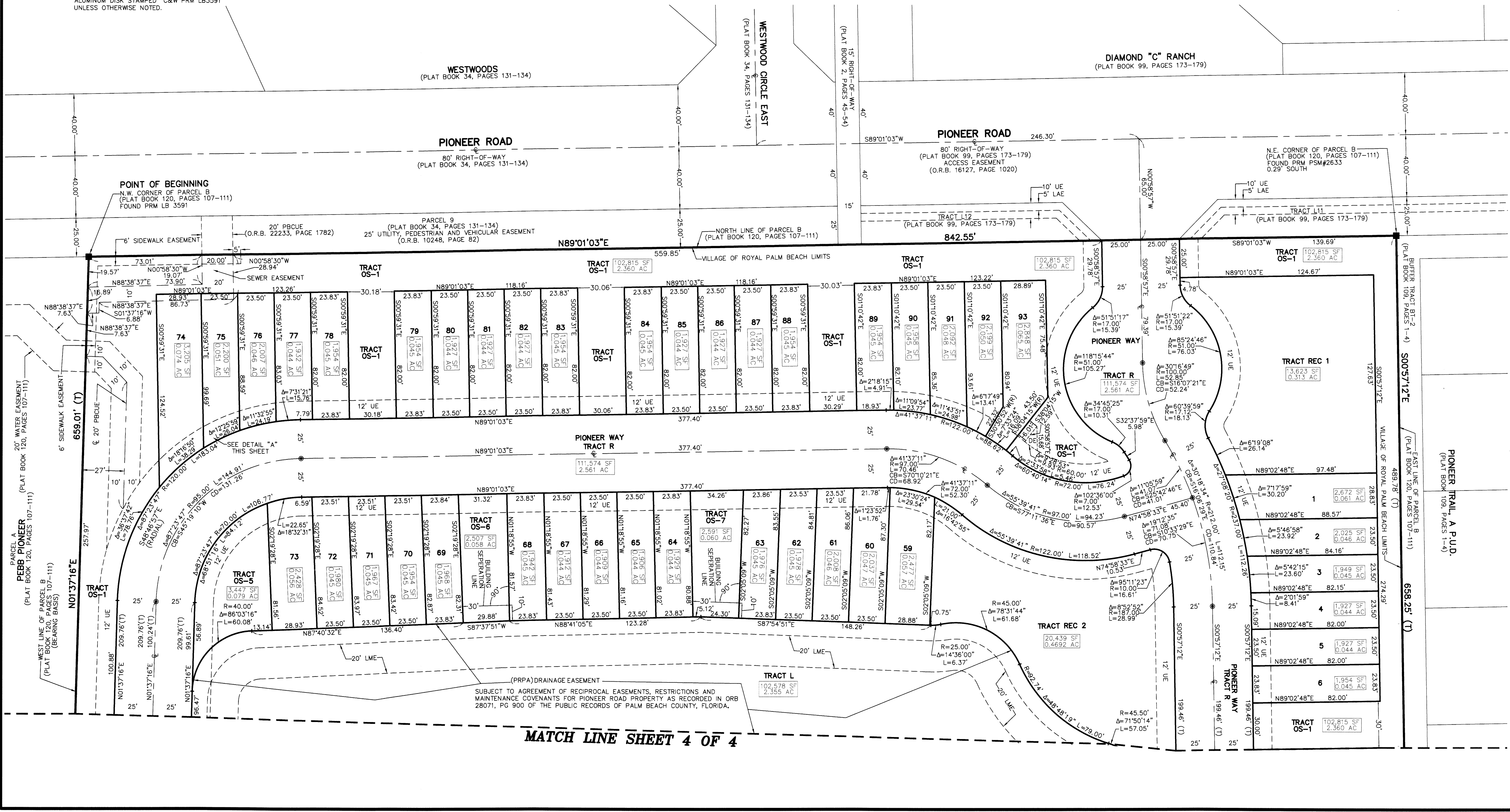


0144

STATE OF FLORIDA  
COUNTY OF PALM BEACH  
THIS PLAT WAS FILED FOR  
RECORD AT \_\_\_\_\_ M.  
THIS \_\_\_\_\_ DAY OF \_\_\_\_\_  
A.D. 2017, AND DULY RECORDED IN  
PLAT BOOK \_\_\_\_\_ ON  
PAGES \_\_\_\_\_ AND \_\_\_\_\_  
SHARON R. BOCK  
CLERK AND COMPTROLLER

BY: \_\_\_\_\_  
DEPUTY CLERK

SHEET 3 OF 4



MATCH LINE SHEET 4 OF 4